



# K&Y Diamond, Precision Tooling

## SINGLE FLUTE END MILLS FOR RASTER OR MICRO-MILLING

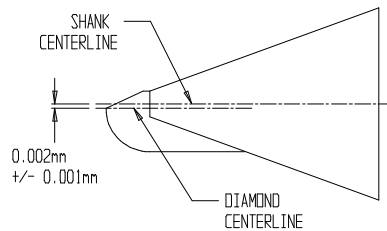
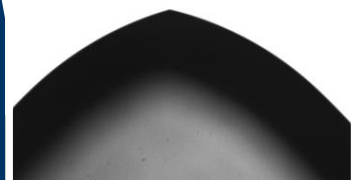
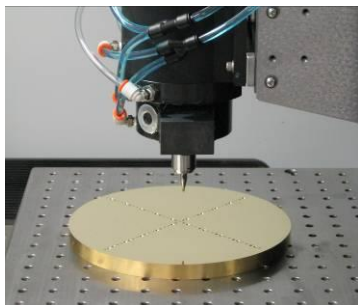
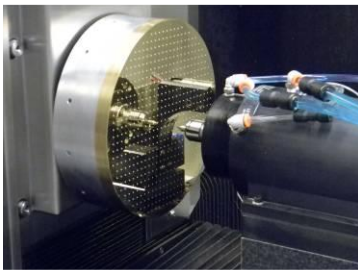
Mono-crystalline diamond end mills used in conjunction with ultra-precision, CNC machine tools are used to manufacture small scale, high aspect ratio optical elements and/or mold inserts in non ferrous metals, alloys, plastics and crystals.

Metals/Alloys: Cu, NiP (>10% P), Al, CuZn (Brass), CuSn (Bronze), CuNi, Sn, Moldmax®

Plastics: Acrylic, Zeonex/Zeonor, Polystyrene, Polycarbonate, Isoplast, Topas, Suncolor, Ultem

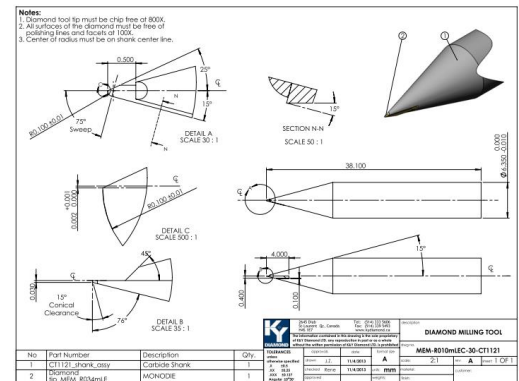
Crystals: Si, Ge, ZnS, ZnSe, CaF, InSb, GaAs, LiNb

K&Y Diamond uses ultra-precision CNC machines for shaping the highest accuracy cutting edges on diamond. This also enables a multitude of high accuracy shapes including spherical ball, ellipse, toroid, cone (sharp point or flat bottom), cylinder or custom facet.

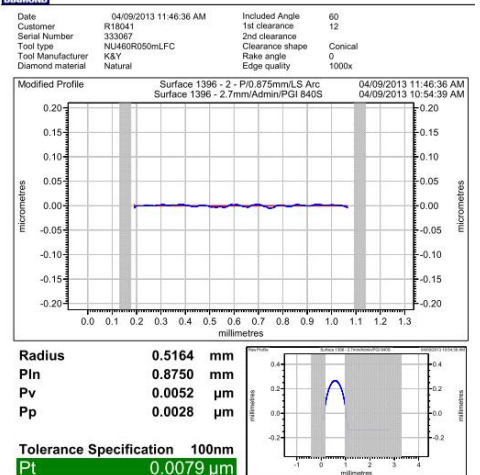


K&Y Diamond's state of the art manufacturing, metrology and assembly techniques provide unique capabilities for shaping diamond into complex shapes with unsurpassed placement accuracy.

Feature	K&Y Capability
End Mill Radius	0.025mm to 2.0mm
Waviness	<50nm P/V over 90°
Diamond alignment	±0.001 mm from cylindrical shank centerline.
Cutting profile	Spherical ball, ellipse, cone, cylinder, custom.
Sweep angle	20° - 90°
Shank Diameter	3mm - 12mm
Shank Material	Tool Steel, Carbide



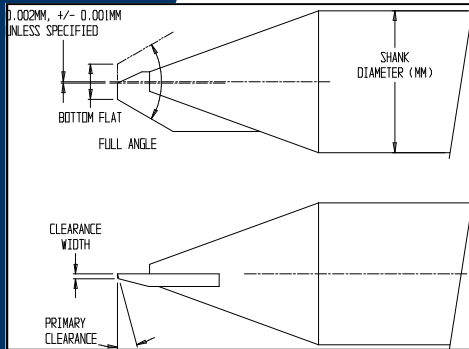
### MEASUREMENT CERTIFICATE



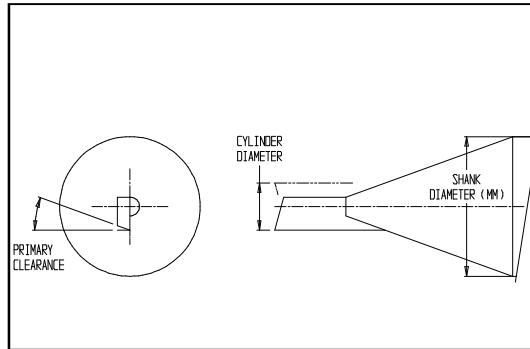


# K&Y Diamond Ordering Information

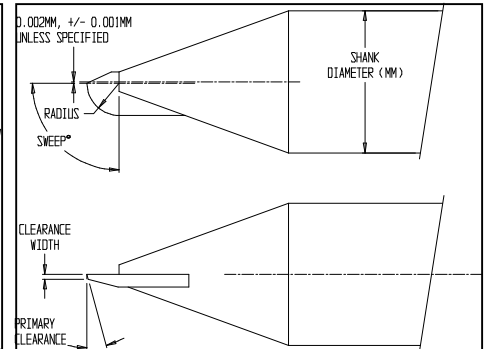
## SINGLE FLUTE END MILLS FOR RASTER OR MICRO-MILLING



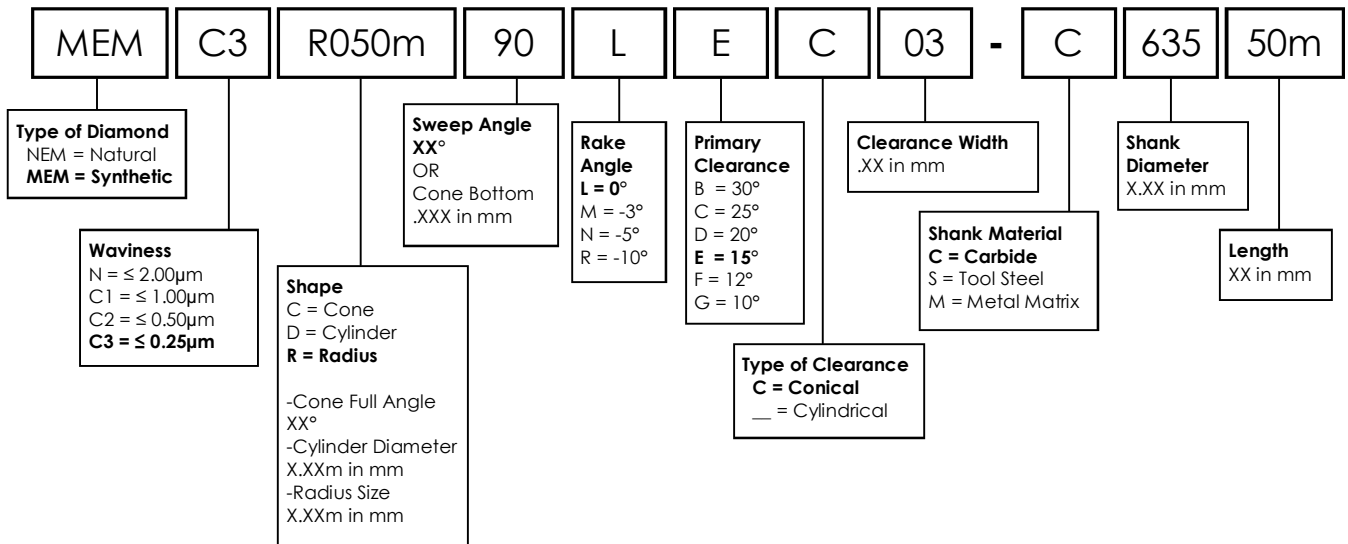
Conical Mill



Side and End Cutting Cylinder



Ball Radius Mill



Send all diamond tool repairs to:

**USA Customers**  
K&Y Diamond  
Trimex Building  
2330 Champlain St.  
Mooers, NY 12958  
T: 514.333.5606

**Canada & International**  
K&Y Diamond  
2645 Diab  
St-Laurent, Quebec, H4S 1E7  
CANADA  
T: 514.333.5606